

STREAMLINED PACKAGED CONCRETE BATCHING



For packaged concrete plants, efficiency thrives when you work with sophisticated controls. Egan Company's *IntelliBatch™ concrete automation system* provides control and data for processing to automatically supply quality concrete and mortar mixes for bulk and small bag packaging. - all with greater batch and inventory tracking in detailed centralized reports.

Color and Special Ingredients

Precision automatic dispensing and/or interlocked hand-add control of high value materials (aggregates, cements, color, powder additives, and fibers). Mix designs come embedded with remote just-in-time control of quality, producing maximum design flexibility and efficiency.

Added Controls

Automate related features such as dryers, dust collectors, cement aeration, and material handling to enable complete control of your operation. Flexibility for customer specific requirements ranging from a digital interface and ERP system to operator efficiency tracking.

Bag Production Management

View live tracking and easily pull reports for small and bulk bag production, as well as bag and pallet labeling and printing.

Repeatable Consistency

All settings for coordinated scaling, mixing, alarm, and material handling are recorded to an SQL database and optimized for web-based reporting. Configurable alarm "severity" levels and email/test message alerts are available.

ADDITIONAL FEATURES:

Small bag check weight recording and weight alarms

Downtime recording and reporting

Overall Equipment Effectiveness (OEE) and production display

Data interface to Material Requirements Planning (MRP) system

EGAN'S INTELLIBATCH™

TEAM offers engineered control and data processing systems for operation of concrete products batch plants. With our sweeping range of features geared toward quality and control, IntelliBatch covers all the bases for your new or existing concrete plant.

Data Storage

A comprehensive set of batching operations historical data is saved to a SQL database. This provides ease of access for critical information to be referenced when needed.

Reporting

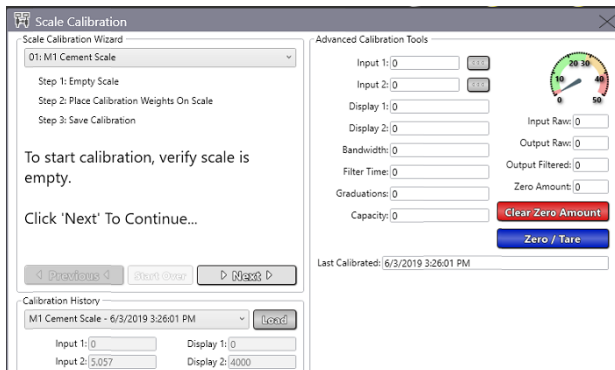
We have over 40 standard reports tailored to every aspect of your operations. Access can be customized by each individual user or group with in-depth information pulled via web-based reporting to assist production management.

Mix Designs

Easily create, edit, and select unlimited comprehensive mix designs.

Scale Calibration

Precisely calibrate scales at each control station.

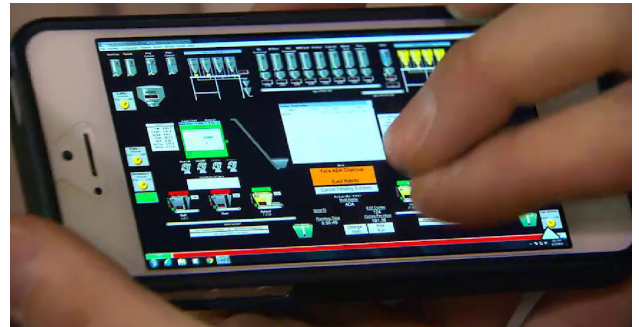


Scale Calibration Wizard

EGAN COMPANY is a system integrator and specialty contractor that delivers attention, commitment, and craftsmanship to every project. IntelliBatch™ products were developed in-house as a result of experience working within hundreds of concrete facilities.

Inventory Management

Easily track material inventory with automatic deduction feedback from dispensing devices and additions by hand-entry.



View reports and system alarms on your mobile phone.

Email and Mobile Alert System

Receive automatic texts and emails in case of system alarms.

Event Logging

Track all activity including setting changes, time stamps, and users.

User Security and Tracking

Our advanced group and user-level access provides flexibility and security. Secure administrative access to system editing and mix designs can be limited to qualified operators or supervisors.

SAFETY is a significant component of all Egan Company projects, and we invest resources into keeping it that way. In fact, we have been recognized as one of America's Safest Companies.